

Revisions:

# [Revision Text]

[dd/mm/yy]



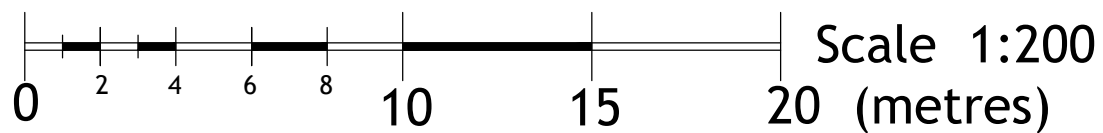
### WEST ELEVATION

Scale: 1:200



### SOUTH ELEVATION

Scale: 1:200



Status:

LISTED BUILDING CONSENT ISSUE



Waggoners Court  
The Street  
Manuden  
Bishop's Stortford  
Hertfordshire  
CM23 1DW

W: [www.barker-associates.co.uk](http://www.barker-associates.co.uk)  
E: [mail@barker-associates.co.uk](mailto:mail@barker-associates.co.uk)

T: 01279 647111  
F: 01279 647027

Client:

ACADEMIES ENTERPRISE TRUST

Project:

TRINITY PRIMARY ACADEMY  
BOUNDS GREEN ROAD  
WOOD GREEN, LONDON  
N22 8ES

PERIMETER FENCING ENHANCEMENT

Title:

PRINCIPAL ELEVATIONS  
SOUTH & EAST

Scale @A3: Date: Drawn: Checked:

1:500 JUNE 2014 PR

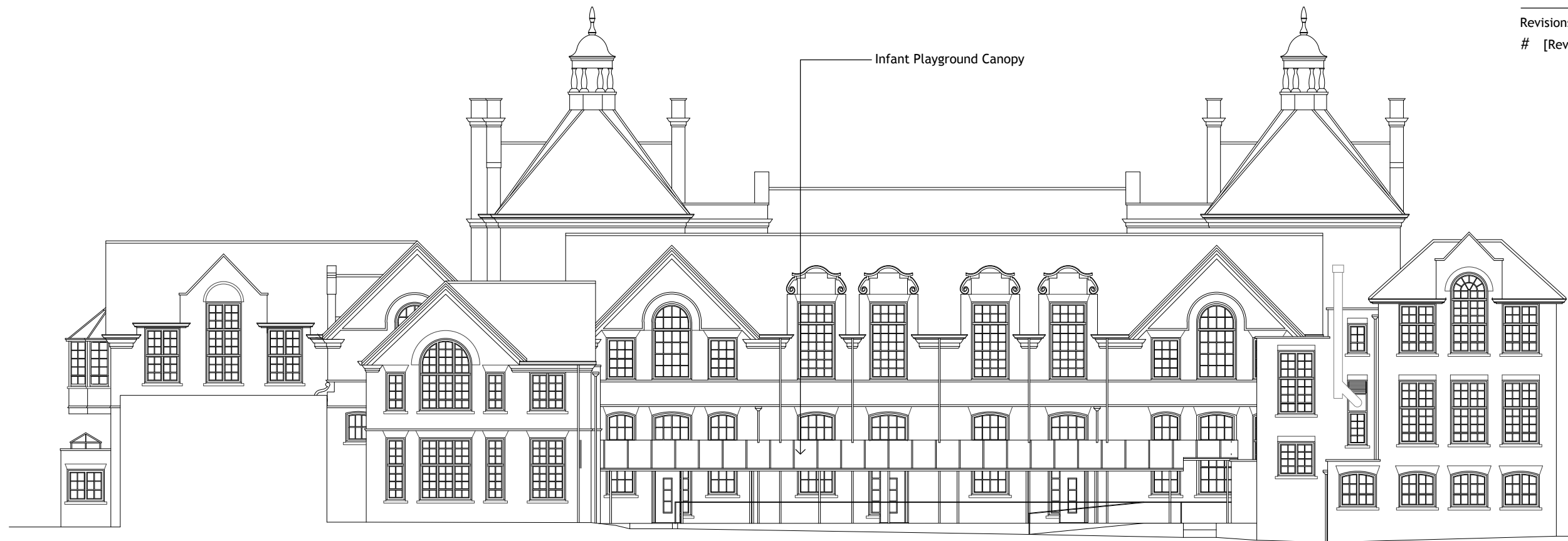
Drawing no.: Revision:

BA / 5042.75.06/221 /

Revisions:

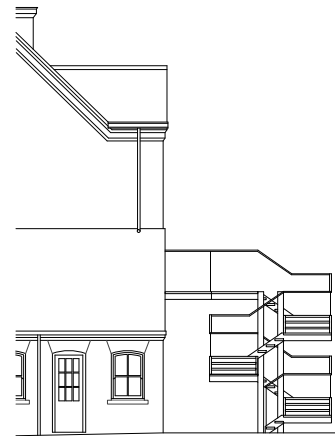
# [Revision Text]

[dd/mm/yy]



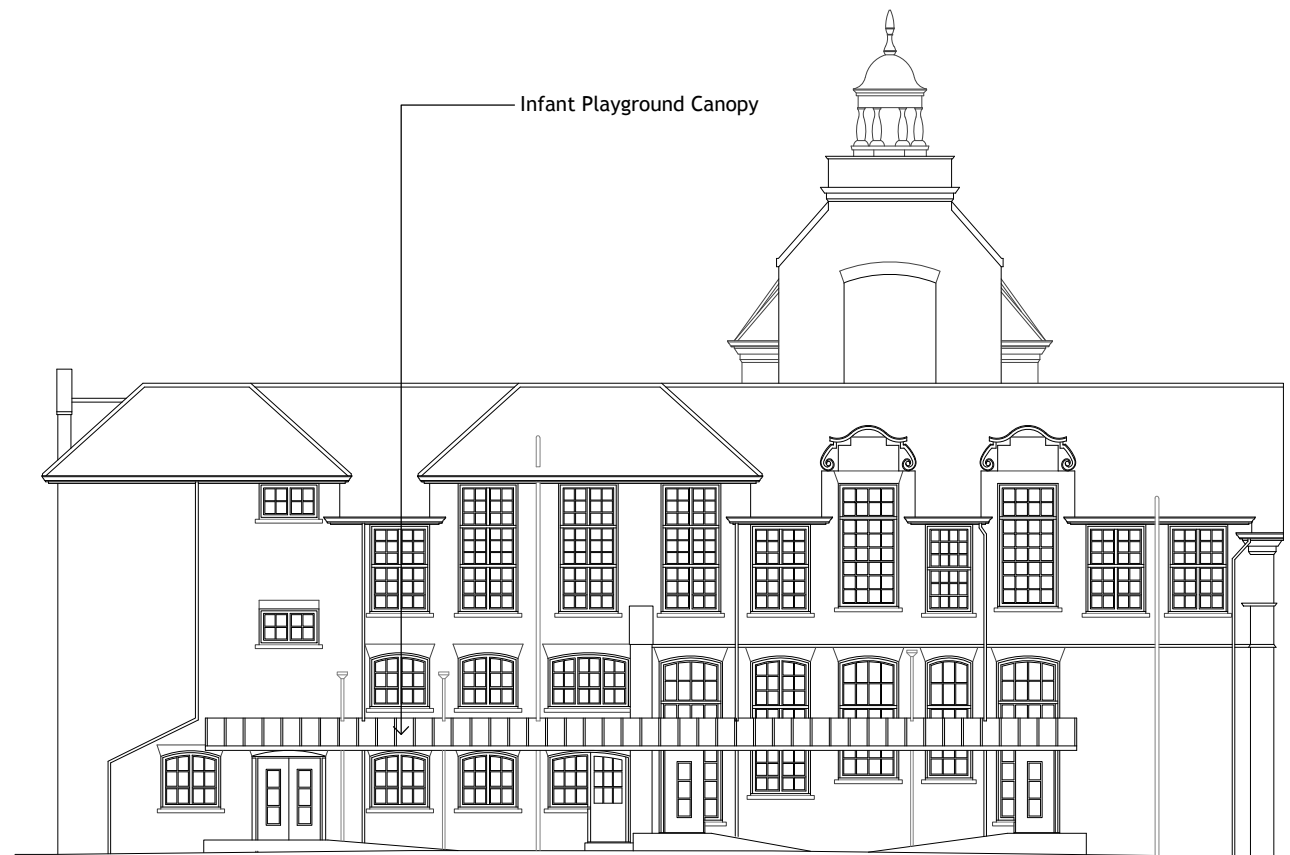
### EAST ELEVATION

Scale: 1:200



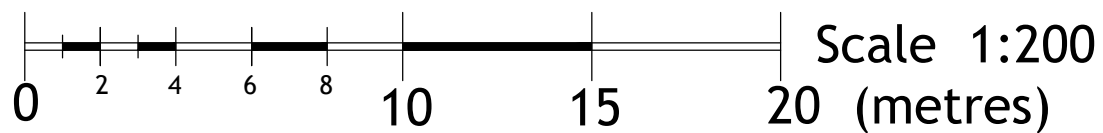
### FIRE ESCAPE ELEVATIONS

Scale: 1:200



### NORTH ELEVATION

Scale: 1:200



Status:

**LISTED BUILDING CONSENT ISSUE**



Waggoners Court  
The Street  
Manuden  
Bishop's Stortford  
Hertfordshire  
CM23 1DW

W: [www.barker-associates.co.uk](http://www.barker-associates.co.uk)  
E: [mail@barker-associates.co.uk](mailto:mail@barker-associates.co.uk)

T: 01279 647111  
F: 01279 647027

Client:

ACADEMIES ENTERPRISE TRUST

Project:

TRINITY PRIMARY ACADEMY  
BOUNDS GREEN ROAD  
WOOD GREEN, LONDON  
N22 8ES

PERIMETER FENCING ENHANCEMENT

Title:

SECONDARY ELEVATIONS  
SOUTH & EAST

Scale @A3: Date: Drawn: Checked:

1:500 JUNE 2014 PR

Drawing no.: Revision:

BA / 5042.75.06/222 /